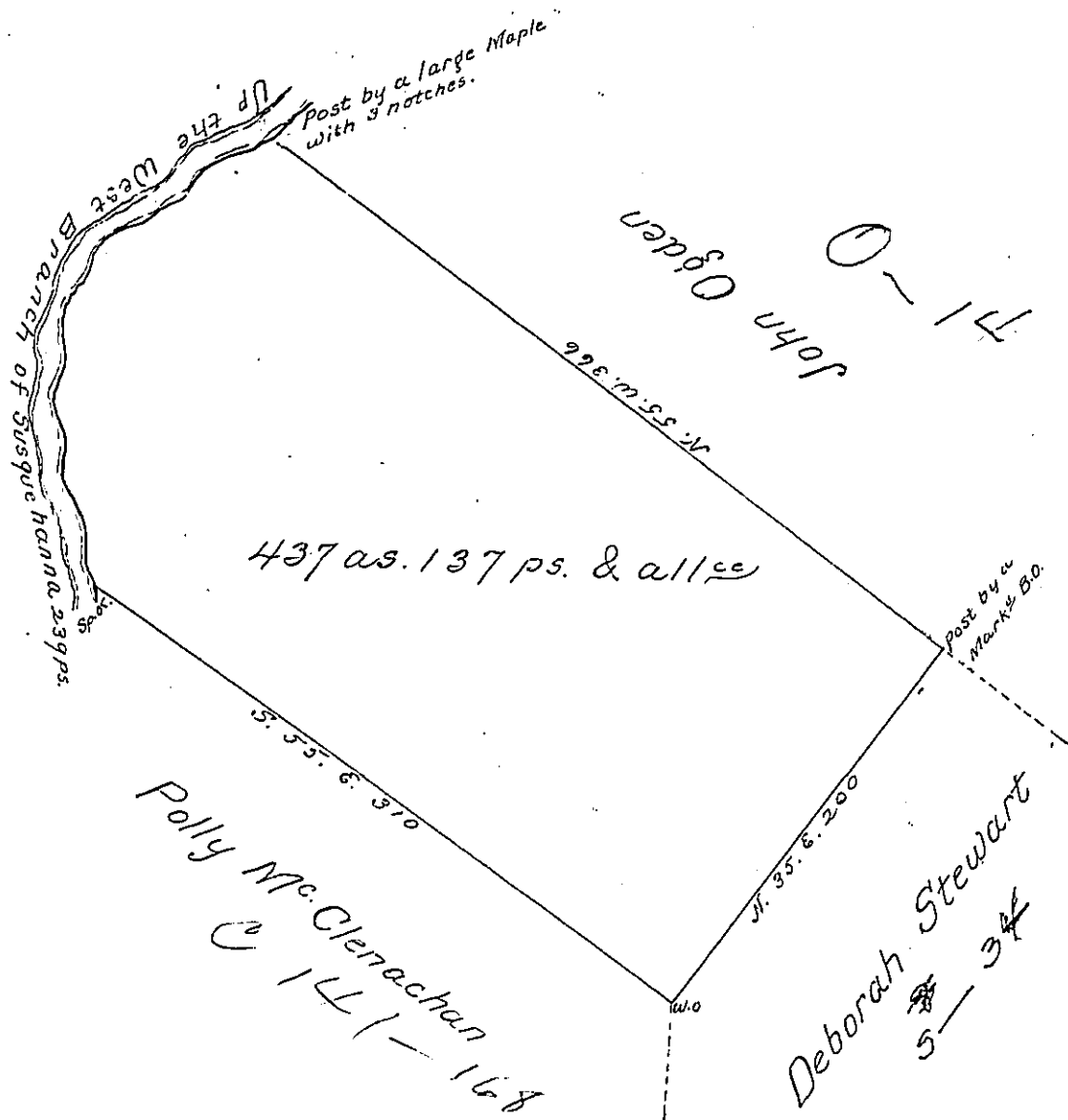


The course & Distance up the River

- S. 49. W. 110
- S. 23. W. 23
- S. 3. W. 30
- S. 19. E. 76 the Sp. o.

239



Situate on the South Side of the West branch of Susquehanna about two miles above the mouth of Millstone Creek in Stewarts Valley Huntingdon County Survey'd 8th. Oct. 1792 to Martha Houston on her warrant dated 27 July 1792 Containing four hundred and thirty seven acres 137 ps. & allee of 6 pct.

John Canavan D.S.
Dund. Brodhead Esqr. S.G.

IN TESTIMONY that the above is a copy of the original remaining on file in the Department of Internal Affairs of Pennsylvania, made conformably to an Act of Assembly approved the 16th day of February, 1833, I have hereunto set my Hand and caused the Seal of said Department to be affixed at Harrisburg, this seventh day of May 1901

James W. Fatta
Secretary of Internal Affairs.